

Subdivision Regulations

BIG HORN COUNTY
MONTANA

County Commissioners
Revised and Adopted by Resolution #2006-12
April 20, 2006

Subdivision Regulations \$10 (\$15 if mailed) CD free

Big Horn County SUBDIVISION REGULATIONS

TABLE OF CONTENTS

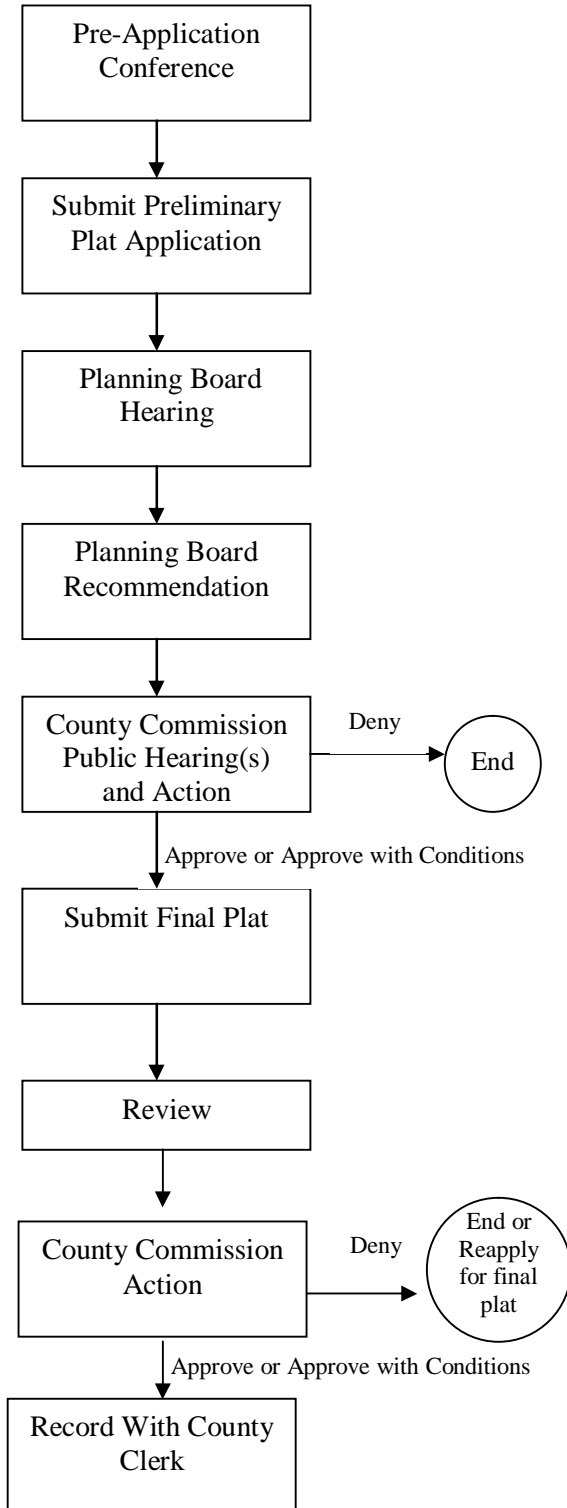
		Page
Section I	General Provisions	1
Section II	General Procedures	5
Section III	Review and Approval Procedures for Major Subdivisions	7
Section IV	Review Procedures for Minor Subdivisions	27
Section V	Design and Improvement Standards	45
Section VI	Land Subdivisions Created by Rent or Lease and Condominiums	73
Section VII	Planned Unit Developments and Cluster Developments	79
Section VIII	Administrative Provisions	83
Section IX	Divisions of Land Exempt from Subdivision Review	89

APPENDICES

Letter	Appendix Title	Page
A	Plan and Plat Application Requirements	A-1
B	Application for Subdivision	B-1
C	Environmental Assessment	C-1
D	Sample Forms and Certificates	D-1
E	Application for Exemption from Subdivision	E-1
F	Uniform Standards for Monumentation, Certificates of Survey, and Final Plats	F-1
G	Subdivision Improvement Guarantees	G-1
H	Standards for Flood Hazard Evaluation	H-1
I	Model Road Access Easement	I-1
J	First Minor Summary of Probable Impacts	J-1
K	Definitions	K-1

FIGURE 1: SUBDIVISION – General Steps

Note: This is a general description. Applicants should refer to the regulations for details related to specific applications.



This meeting with the Subdivision Administrator is required in order to determine the type of subdivision, applicable review criteria, and what is needed for a complete application.

The application is submitted to the Subdivision Administrator. Once the application is determined complete and the information determined sufficient for review, it is forwarded to the planning board. (See Figure 2 for more information on “Element” and “Information” Review process)

Public hearings are only held for major subdivisions (generally those subdivisions with six or more lots, although some subdivisions with five or fewer lots may also qualify as “major” subdivisions).

The planning board makes a recommendation to the County Commissioners. The planning board is advisory only.

The County Commissioners are the decision-making body. A decision to approve or approve with conditions typically includes a number of items that must be completed prior to final plat.

No lot can be transferred, leased, or rented until specified improvements have been made or an improvements guarantee has been finalized with the county. Final plat applications are required to ensure that required improvements or guarantees have been made.

Once the final plat application is received, it is reviewed by the Subdivision Administrator and the County Commissioners.

Filing is required before any transfer can be made of most subdivisions parcels.

FIGURE 2: Subdivision Review Process- Additional Detail

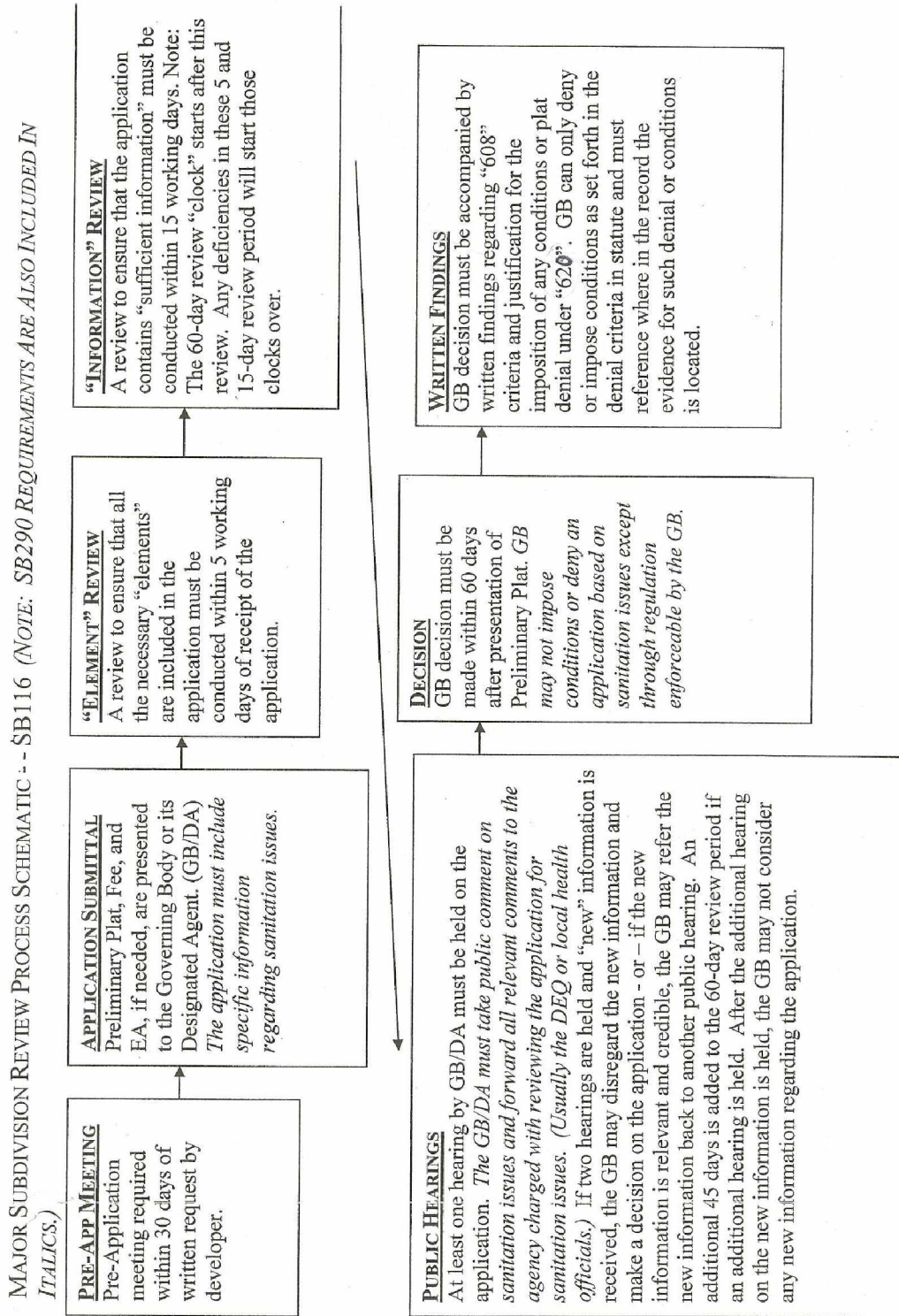
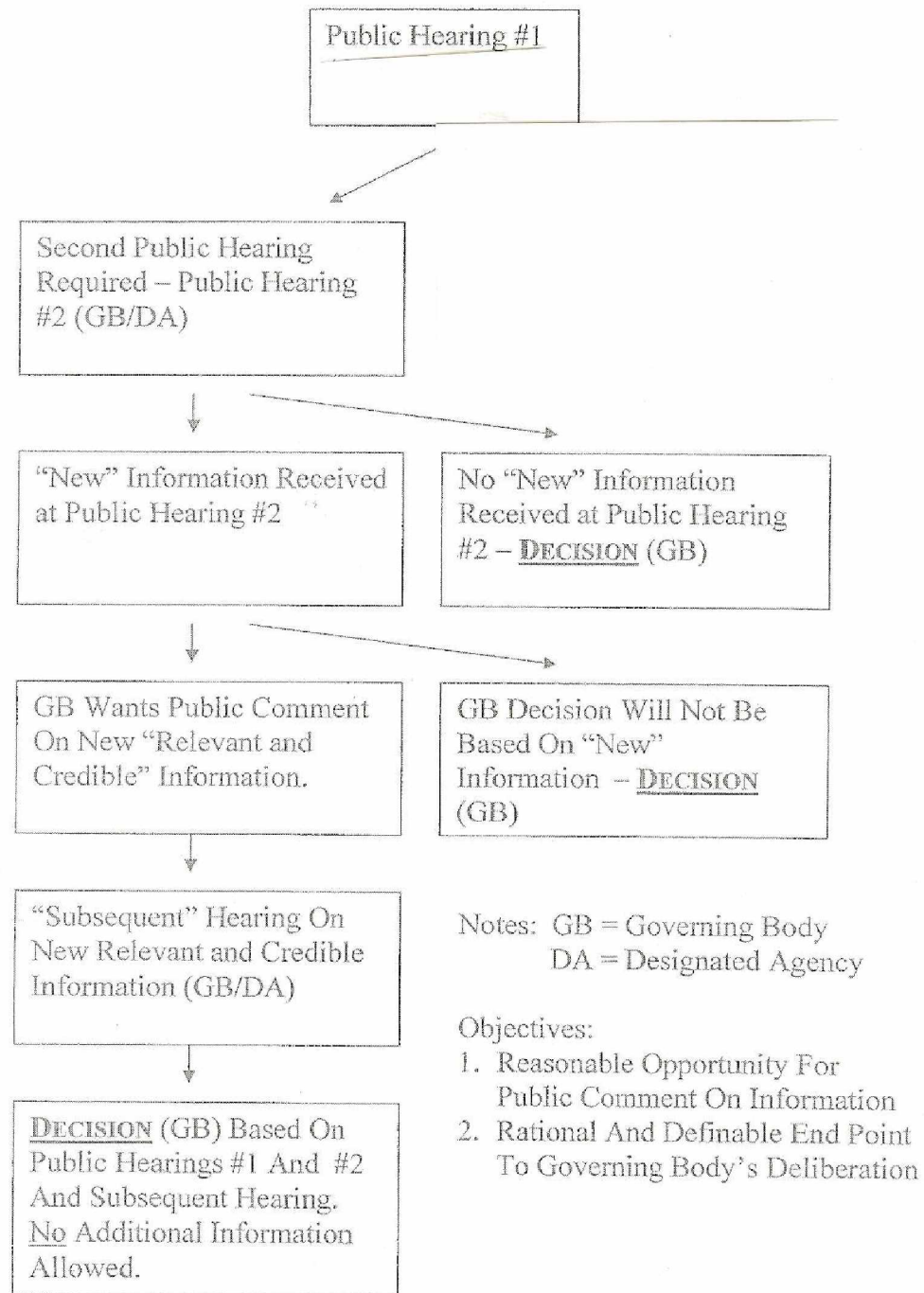


FIGURE 3: Public Hearings – Additional Detail on Process



THIS PAGE LEFT INTENTIONALLY BLANK.